

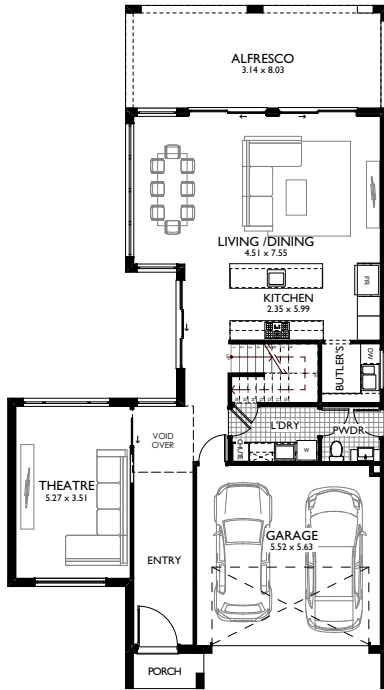
REVERE 36

Inspired Living

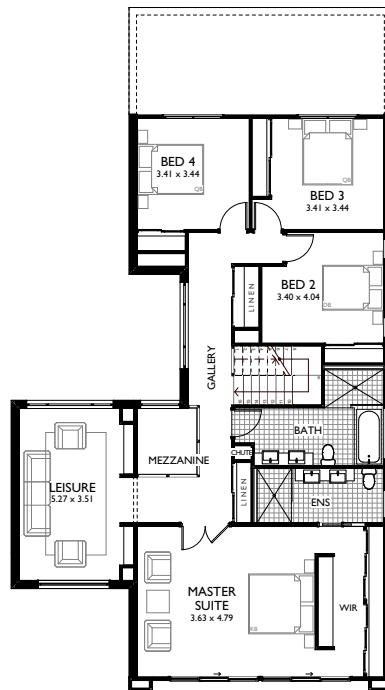


L 20.87m W 11.63m

GROUND FLOOR



FIRST FLOOR



The Revere is a home that combines architecturally inspired features with open plan living areas perfect for the modern family.

The practical and spacious design connects the home with a stunning courtyard and alfresco and makes day-to-day living, as well as entertaining, feel effortless.

Ground Floor	114.64m ²
First Floor	155.49m ²
Garage	33.75m ²
Alfresco	25.50m ²
Portico	2.73m ²
Total Floor Area	332.11m²



Phone (02) 9729 0711 • info@focushomes.com.au • www.FocusHomes.com.au