

REPOSE 28

Spacious Living

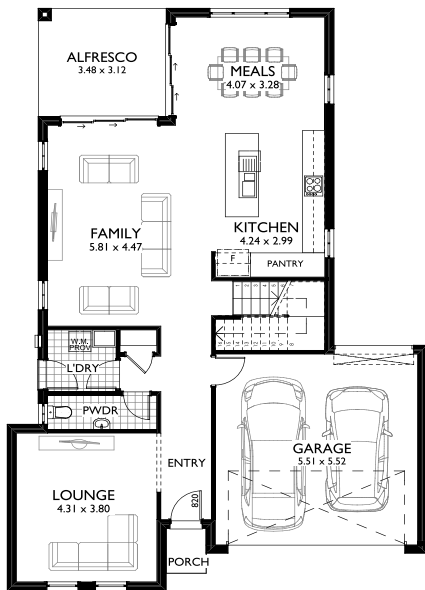


L 16.79m W 11.39m

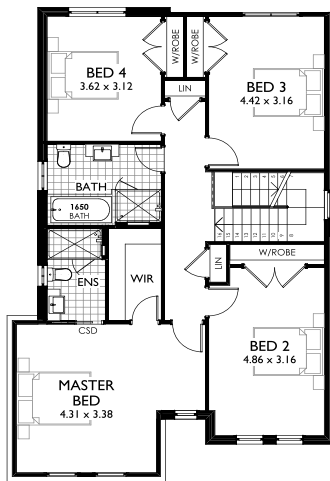
FOCUS
HOMES

U+
US

GROUND FLOOR



FIRST FLOOR



Welcome to the **Repose** with its practical layout which is both spacious and affordable. There's a decent sized Lounge area upon entry. With an open concept floor plan to the rear of the home, it features a considerable Kitchen/Family/Dining area including large stacker doors with access to an Alfresco and views to the backyard.

Ground Floor	103.53m ²
First Floor	105.79m ²
Garage	33.84m ²
Alfresco	10.84m ²
Portico	1.53m ²
Total Floor Area	255.53m²



Phone (02) 9729 0711 • info@focushomes.com.au • www.FocusHomes.com.au

Facade Images shown on our brochures may feature alternative upgrades. Upgraded finishes are not included in the standard range or house design and should be used as a guide only. Plan dimensions, sizes & square meters will vary dependent on the chosen house facade & design. Focus Homes reserves the right to revise plans, specifications & prices without notice or obligation. All plans are Copyright of Focus Homes. Please consult your sales consultant for a full list of standard inclusions & facade options.