

# NIRVANA 32

*Family Living*

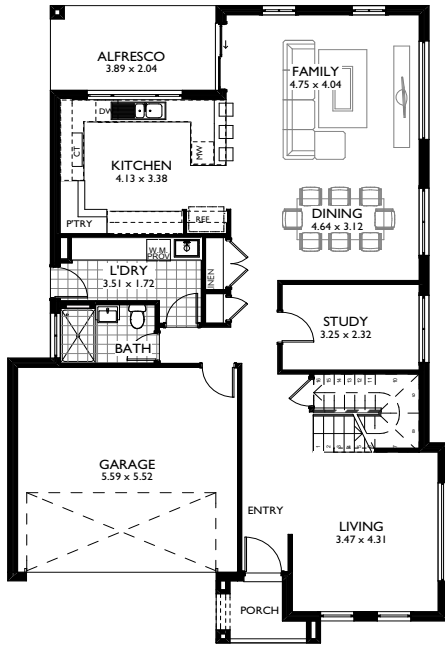


L 17.14m W 11.15m

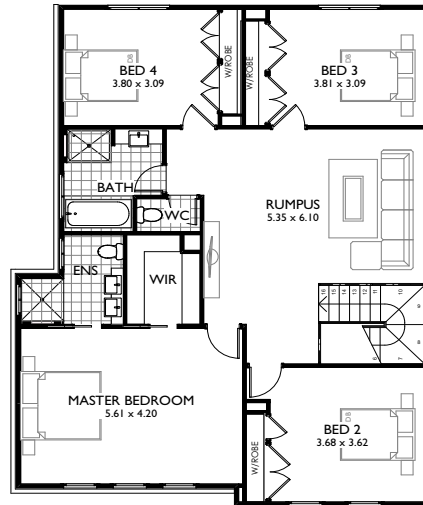
**FOCUS**  
HOMES

**U+**  
**US**

## GROUND FLOOR



## FIRST FLOOR



The Nirvana is built for families and designed to fit the narrow lot. The large entry welcomes you into the home, leading you to the open, family friendly living area. Upstairs, the parents are not forgotten with a luxurious master bedroom with walk-in robe and ensuite. Three spacious bedrooms and enormous rumpus area completes the first floor.

Ground Floor	116.85m <sup>2</sup>
First Floor	128.24m <sup>2</sup>
Garage	34.71m <sup>2</sup>
Alfresco	9.57m <sup>2</sup>
Portico	3.50m <sup>2</sup>
<b>Total Floor Area</b>	<b>292.87m<sup>2</sup></b>



Phone (02) 9729 0711 • [info@focushomes.com.au](mailto:info@focushomes.com.au) • [www.FocusHomes.com.au](http://www.FocusHomes.com.au)