

# INSPIRE 34

*Your Retreat*

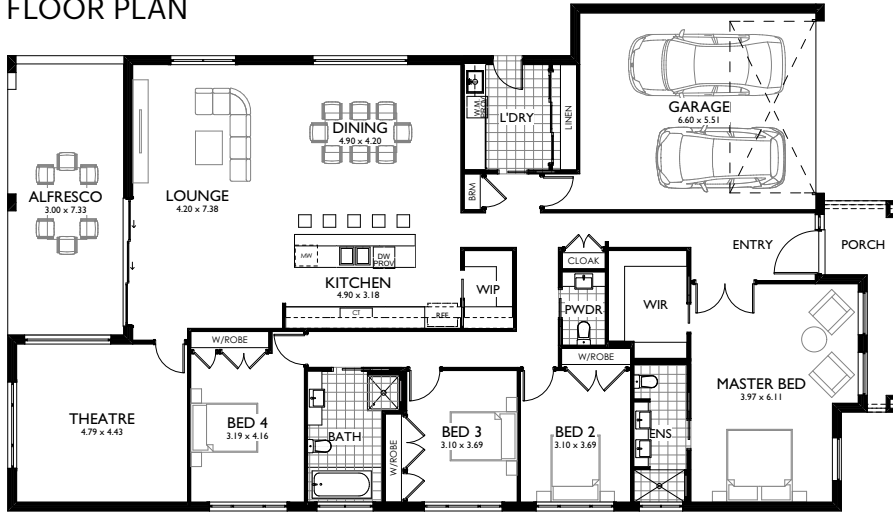


L 24.99m W 14.15m

**FOCUS**  
HOMES

**U+**  
**US**

## FLOOR PLAN



The Inspire is a great family home with everyday living in mind.

From the moment you open the front door, you immediately experience a sense of space.

The spacious kitchen, dining and lounge gives plenty of space for entertaining.

The master bedroom with retreat area boasts a huge walk-in robe and stylish ensuite. The three large bedrooms all have built in robes.

Floor Living	239.12m <sup>2</sup>
Garage	41.52m <sup>2</sup>
Alfresco	25.27m <sup>2</sup>
Portico	8.38m <sup>2</sup>
<b>Total Floor Area</b>	<b>314.29m<sup>2</sup></b>



Phone (02) 9729 0711 • [info@focushomes.com.au](mailto:info@focushomes.com.au) • [www.FocusHomes.com.au](http://www.FocusHomes.com.au)