

# ENDEAVOUR 36

*Room to grow*



- 5 
- 2 
- 3 
- 2 

L 19.55m W 12.34m

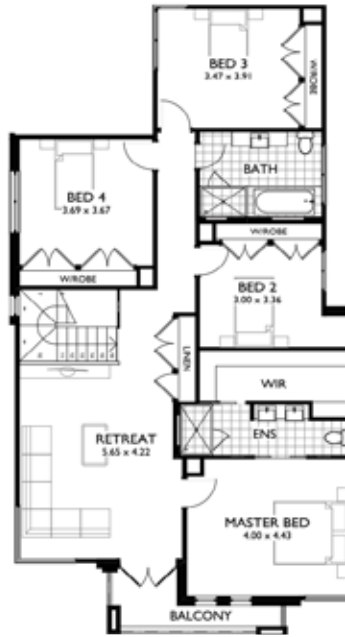
**FOCUS**  
HOMES

**U+**  
**US**

## GROUND FLOOR



## FIRST FLOOR



The Endeavour embraces modern design and architectural flair. The open plan kitchen, dining and lounge area all blend seamlessly with the alfresco to create the perfect space for entertaining friends and family.

The master bedroom is a haven with an indulgent ensuite and walk-in robe. Another 4 bedrooms are all generously sized; perfect for growing kids and teenagers.

Ground Floor	128.92m <sup>2</sup>
First Floor	134.92m <sup>2</sup>
Garage	37.62m <sup>2</sup>
Alfresco	18.04m <sup>2</sup>
Portico	6.18m <sup>2</sup>
Balcony	5.88m <sup>2</sup>
<b>Total Floor Area</b>	<b>331.56m<sup>2</sup></b>



Phone (02) 9729 0711 • [info@focushomes.com.au](mailto:info@focushomes.com.au) • [www.FocusHomes.com.au](http://www.FocusHomes.com.au)